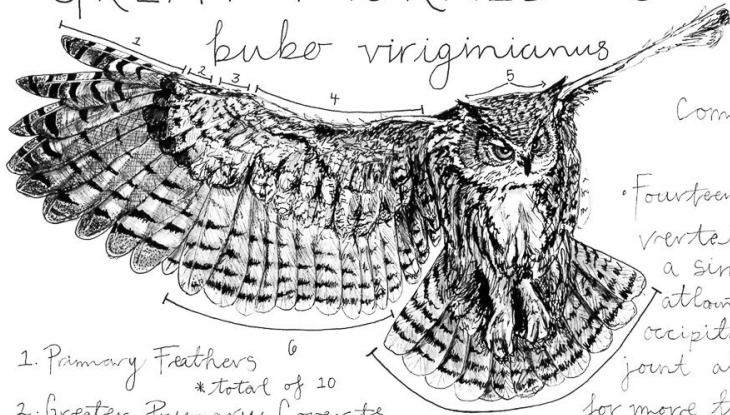
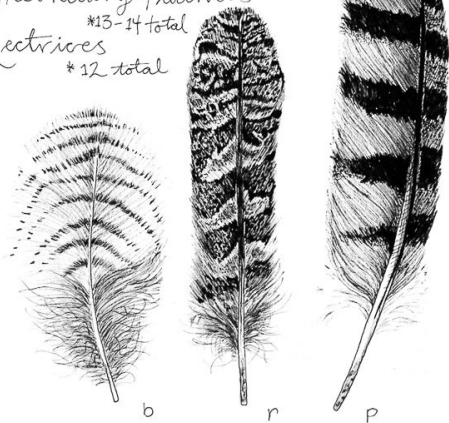


GREAT HORNED OWL

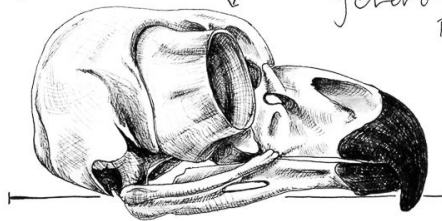
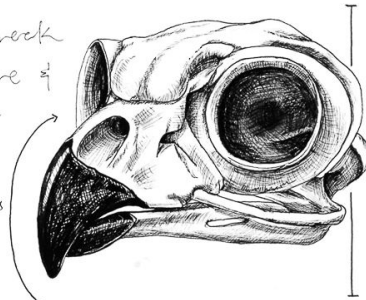


1. Primary Feathers ⁶
*total of 20
2. Greater Primary Coverts
3. Median Coverts
4. Lesser Coverts
5. Ear tufts
6. Secondary Feathers
*13-14 total
7. Rectrices
*12 total



• Eyes are elongated & tube-shaped, making them completely immobile.

• Fourteen neck vertebrae & a single atlanto-occipital joint allows for more than 180 degrees of neck rotation.



IDENTIFICATION

- Mottled gray brown w/ reddish brown faces.
- White patch on throat.
- Yellow eyes & dark ear tufts.
- LENGTH: 18.1 - 24.8 in WINGSPAN: 39.8 - 57.1 in

Brittany Finch '23

Brittany Finch, *Great Horned Owl Field Journal*, 2023
ink on paper, 13 x 13 in.
FINC-0008, \$600